



Enterprise-Grade AI & IT Solutions - Trusted by Businesses, Built for Scale



# INTRODUCTION

---

Established in 2017, AALA IT Solutions has consistently evolved in the Information Technology sector, delivering innovative solutions that cater to diverse business needs. Our commitment to excellence has positioned us as a trusted partner for clients seeking reliable and cutting-edge IT services.

We pride ourselves on our ability to adapt to the ever-changing technological landscape, ensuring that our clients receive solutions that are both current and effective. Our team of skilled professionals is dedicated to delivering projects that not only meet but exceed client expectations.

With a global presence and a portfolio of successful projects, AALA IT Solutions continues to empower businesses by providing services that drive growth and innovation.

**Our expertise spans across various domains, including:**

- Artificial Intelligence & Machine Learning Solutions
- Intelligent Process Automation
- Custom Software Development
- Mobile Application Development
- Web Development
- ERP Solutions
- UI/UX Design
- Branding and Graphic Design
- IT Strategy & Consulting
- Project Management




# Message from CEO

Since the inception of AALA IT Solutions, our mission has been to deliver value-driven products and services that empower our clients. Embracing the latest technologies, we've consistently aimed to provide unparalleled quality and innovation.

AALA is more than just a company; it's a family. Our journey from a modest beginning to a comprehensive IT solutions provider is a testament to the dedication and passion of our team. We've cultivated long-standing relationships with our clients, many of whom return to us for their evolving needs.

Our vision is clear: to continue expanding our horizons, embracing new challenges, and ensuring that our clients remain at the heart of everything we do. I extend my heartfelt appreciation to our team for their unwavering commitment and to our clients for their trust and collaboration.

Together, we look forward to a future filled with growth, innovation, and shared success.

 <https://www.c-suiteinsider.com/award-winner-2024/aamir-mahmood/>

 <https://www.linkedin.com/in/aamir-rajpoot/>



*Aamir*

**Aamir Mahmood**

Chief Executive Officer  
AALA IT Solutions



# VISION & MISSION

---

Empowering Businesses Through Innovative IT Solutions

## Vision

To be the partner businesses trust when technology needs to deliver results, not complexity.

## Mission

We analyze your challenges, adapt to your needs, learn from every project, and apply solutions that work - delivering tailor-made IT services with transparency and measurable impact.

---

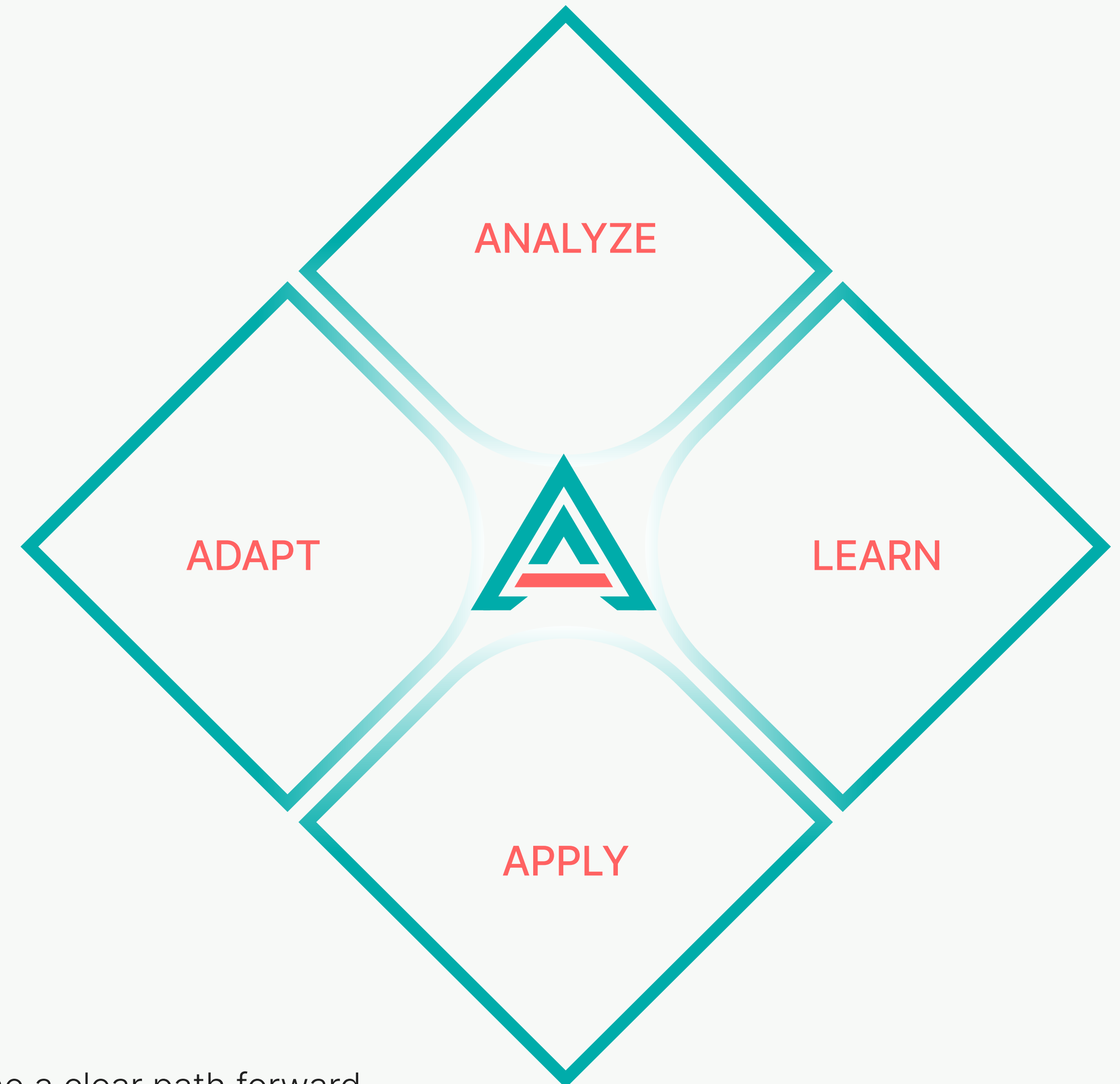
Through this proven process, AALA IT Solutions has successfully executed numerous large-scale projects, delivering robust and intelligent features that meet our clients' needs.

**Analyze:** We assess project goals, constraints, and resources to define a clear path forward

**Adapt:** We adjust strategies as needed to meet evolving requirements and challenges

**Learn:** We learn continuously to align with client needs

**Apply:** We implement effective, practical solutions focused on client success



# WE PROVIDE

---

At AALA IT Solutions, we transform business challenges into intelligent solutions through expert software development, strategic IT services, and cutting-edge technology.

We work in close partnership with our clients to build efficient teams and create innovative products that drive success.

Our team doesn't just deliver projects  
we build partnerships that last.



# OUR SERVICES

AALA IT Solutions offers a diverse range of services designed to meet the evolving needs of businesses in the digital era:

## AI & Machine Learning

Custom AI solutions that transform data into actionable insights and competitive advantage.

## Intelligent Process Automation

Streamline operations with AI-powered automation that reduces costs and increases efficiency.

## Custom Software Development

Tailored software solutions to address specific business challenges.

## Mobile Application Development

Development of user-friendly mobile applications for Android and iOS platforms.

## Web Development

Creation of responsive and dynamic websites to enhance online presence.

## UI/UX Design

Designing intuitive user interfaces and experiences to improve user engagement.



## Clientele

With a proven track record of delivering impactful solutions, AALA IT Solutions has successfully partnered with over 160 clients worldwide, fostering long-term relationships built on trust and excellence. Our portfolio spans diverse industries, including finance, **e-commerce**, and technology, reflecting our commitment to innovation and quality.

Notable collaborations include enhancing the **sFOX trading platform's** UI and **performance**, developing a comprehensive picture management system for **SitePics**, and creating a **custom ERP solution** for **Lapchi LLC**, which led to a 40% increase in operational efficiency.

Our clients **consistently commend** our professionalism, technical expertise, and dedication to their success. As one client noted: 'Unlike past contractors, they truly understood our goals—the client's success is their success.'

# 160+

Happy Clients

# 95%

Retention Ratio

# Clutch

Overall Review Rating

## 4.9



<https://clutch.co/profile/aala-it-solutions>

# upwork



100% Job Success



Top Rated Plus

<https://www.upwork.com/agencies/aala/>



sFOX, a leading **cryptocurrency trading platform**, identified opportunities to enhance its user interface and overall system robustness. To maintain its competitive edge and deliver an **optimal user experience**, sFOX partnered with AALA IT Solutions to implement key improvements.

Our collaboration focused on **UI optimization**, ensuring a more intuitive and efficient experience for institutional users. We also conducted a **full version update of platform components**, improving **performance** and **scalability**. Additionally, the testing framework was enhanced with comprehensive new test cases, strengthening platform stability and security.

All enhancements were delivered with **zero downtime**, meeting tight deadlines while **maintaining uninterrupted** service. The result was a more reliable, scalable, and user-friendly platform, fully aligned with sFOX's vision for the future of institutional crypto trading.



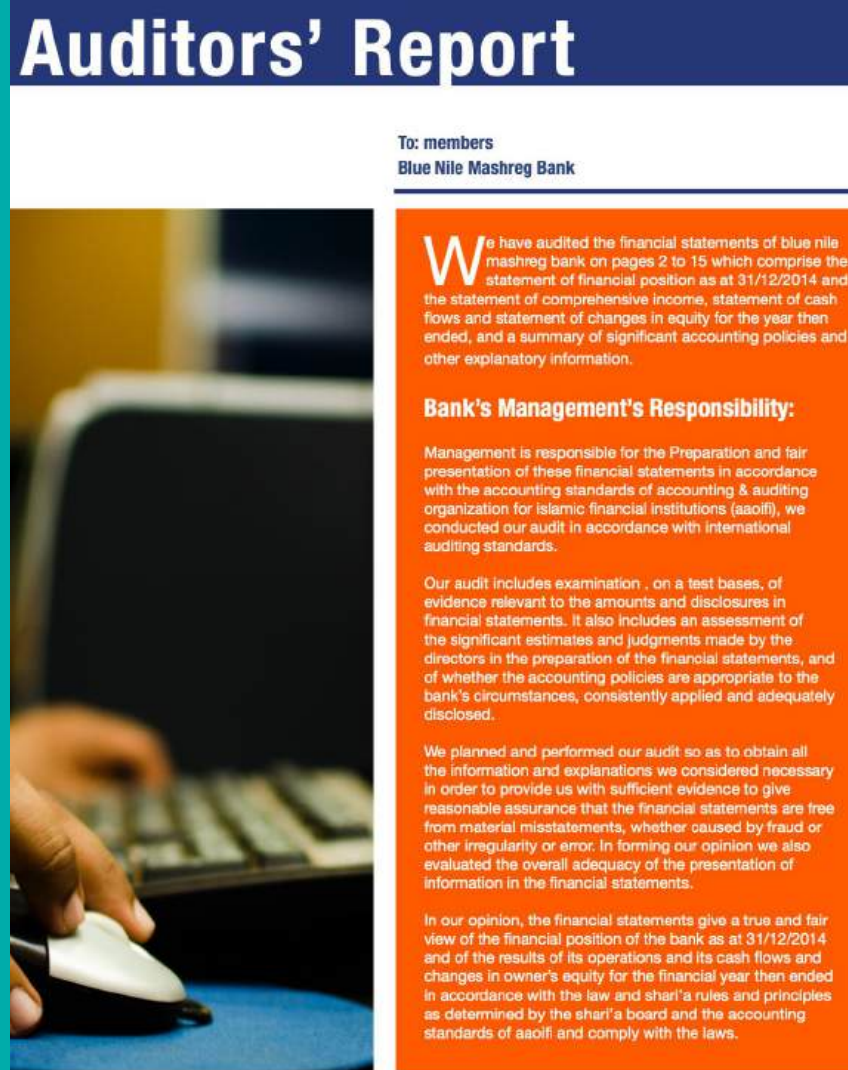
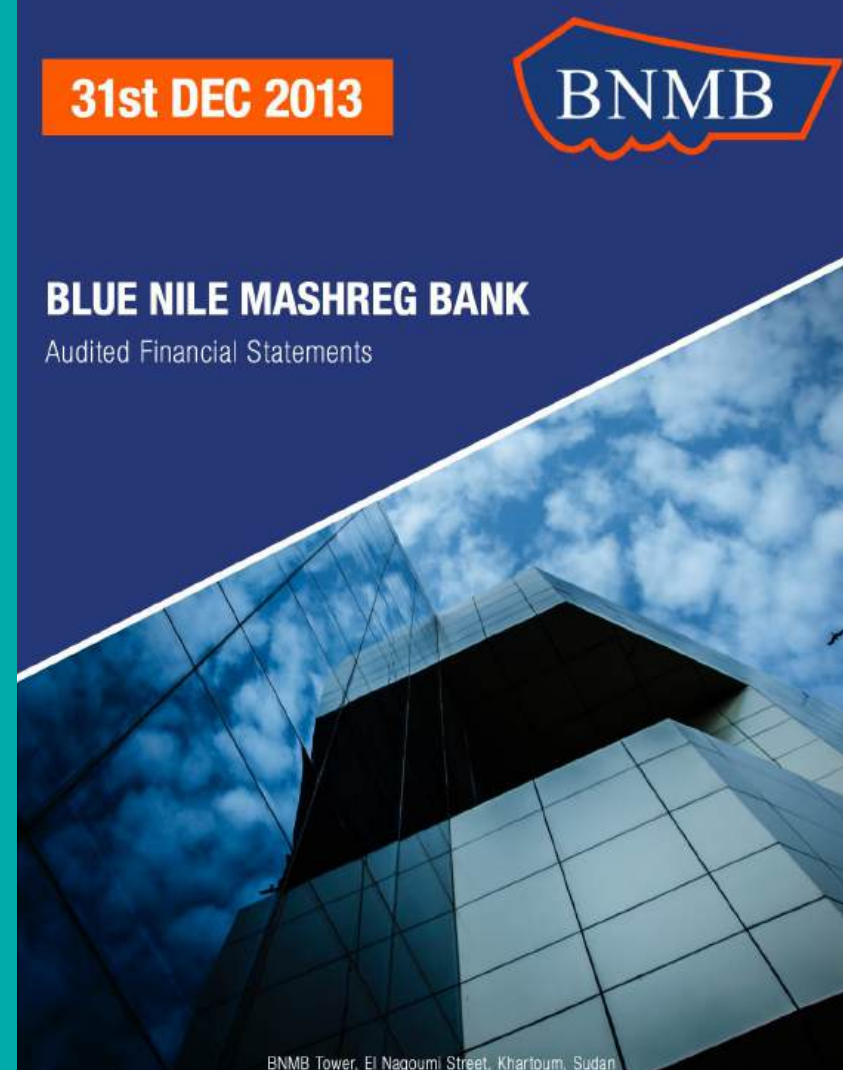




بنك النيل الأزرق المشرق  
Blue Nile Mashreg Bank

We had the privilege of collaborating with Blue Nile Mashreg Bank, a prominent financial institution in Sudan, to enhance their digital and financial communication tools. Our team **designed their official website**, ensuring a user-friendly interface and seamless navigation to effectively represent the bank's services and values online.

In addition to the website, we were entrusted with the design and formatting of the bank's annual financial statements for three consecutive years. These comprehensive PDF reports for 2013, 2014, and 2015 were crafted to present complex financial data in a clear and professional manner, aligning with the bank's commitment to transparency and excellence.



Blue Nile Mashreg Bank Statement Of Financial Position As At 31 Dec 2014				
Assets	Note	2013- SDG	2012- SDG	
Cash & Cash Equivalents	(5)	554,892,733	695,421,892	
Sales Receivable	(6)	50,216,793	51,334,260	
Investments	(7)	1,118,368,177	800,131,449	
Long Term Investments	(8)	527,673	166,163	
Other Assets	(9)	26,441,420	25,271,703	
Branch Expenditure	(10)	7,389,841	-	
Capitalized Expenditure	(11)	-	3,174,321	
Fixed Assets (Net Book Value)	(12)	60,104,460	63,186,702	
<b>Total Assets Liabilities, Unrestricted Investment Accounts And Owners' Equity:</b>		<b>1,819,009,394</b>	<b>1,860,167,260</b>	
Liabilities				
Current Accounts and Saving Accounts	Note	2013- SDG	2012- SDG	
Payable	(13)	47,852,517	79,737,936	
Other Liabilities	(14)	76,102,038	46,941,152	
<b>Total Liabilities</b>		<b>123,954,555</b>	<b>126,679,088</b>	
<b>Total Liabilities &amp; Unrestricted Investment Accounts</b>		<b>1,800,767,426</b>	<b>1,733,487,900</b>	
Owners' Equity				
Paid-Up Capital	(15)	177,125,155	177,125,155	
Legal Reserve		48,342,176	51,108,889	
Retained Earnings	(16)	284,704,667	107,613,489	
<b>Total Owners' Equity</b>		<b>510,172,018</b>	<b>335,847,533</b>	
<b>Total Liabilities &amp; Unrestricted Investment Accounts And Owners' Equity</b>		<b>1,810,939,444</b>	<b>1,769,335,433</b>	
Contra Accounts				
Letters of Credit		80,876,424	150,380,246	
Letters of Guarantee		2,886,266	3,375,336	
Others	(17)	142,261	45,582	
		<b>83,904,951</b>	<b>154,411,224</b>	
Mohammad Ismail Mohammad Chairman	Abdel Bay Abdelh Hissan Director	Ismail Osman Mahgub Gad General Manager		

Blue Nile Mashreg Bank Statement Of Financial Position As At 31 Dec 2014				
Assets	Note	2014- SDG	2013- SDG	
Cash & Cash Equivalents	(5)	743,887,039	554,892,733	
Sales Receivable	(6)	7,408,883	50,216,793	
Investments	(7)	1,143,070,519	1,118,368,177	
Long Term Investments	(8)	527,981	527,673	
Other Assets	(9)	30,895,022	26,441,420	
Branch Expenditure	(10)	19,303,841	7,389,841	
Fixed Assets (Net Book Value)	(11)	84,488,275	60,104,460	
<b>Total Assets Liabilities, Unrestricted Investment Accounts And Owners' Equity</b>		<b>2,029,409,590</b>	<b>1,819,009,394</b>	
Liabilities				
Current Accounts and Saving Accounts	Note	2014- SDG	2013- SDG	
Payable	(13)	899,795,732	802,448,536	
Other Liabilities	(14)	58,058,621	47,852,517	
<b>Total Liabilities</b>		<b>1,068,043,151</b>	<b>897,282,444</b>	
<b>Total Liabilities &amp; Unrestricted Investment Accounts</b>		<b>1,429,533,844</b>	<b>1,309,767,576</b>	
Owners' Equity				
Paid-Up Capital	(15)	202,777,896	177,125,155	
Legal Reserve		69,531,360	48,342,176	
Retained Earnings	(16)	357,266,780	284,704,667	
<b>Total Owners' Equity</b>		<b>629,576,046</b>	<b>510,172,018</b>	
<b>Total Liabilities &amp; Unrestricted Investment Accounts And Owners' Equity</b>		<b>2,029,409,590</b>	<b>1,819,009,394</b>	
Contra Accounts				
Letters of Credit		14,328,903	80,876,424	
Letters of Guarantee		2,131,210	2,886,266	
Others	(17)	16,460,113	83,904,951	
Mohammad Ismail Mohammad Chairman	Abdel Bay Abdelh Hissan Director	Ismail Osman Mahgub Gad General Manager		







# Seamless, **Fully-Integrated,** **Continuous,** Testing Platform

Simplified Testing Solutions for Web Apps and APIs

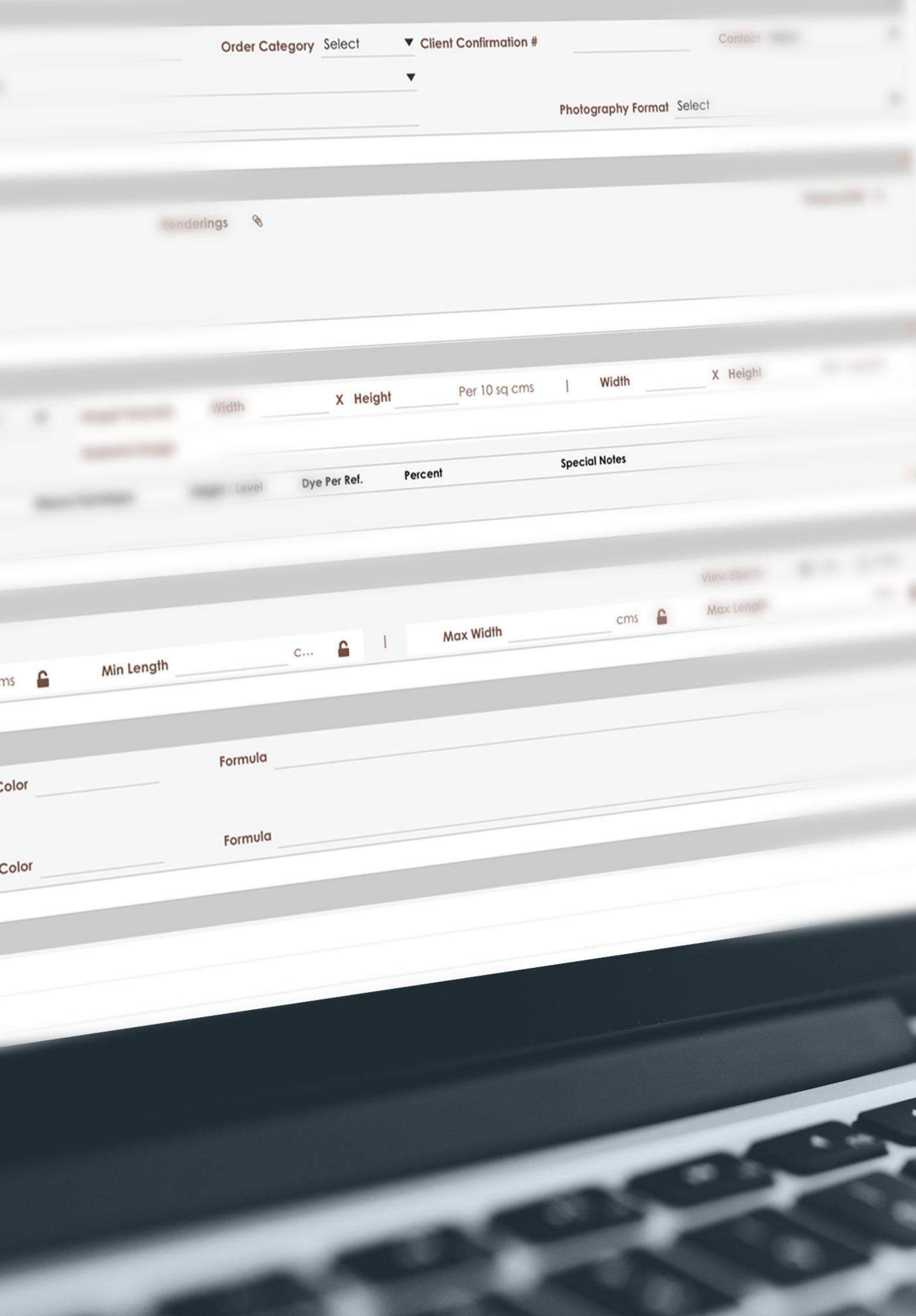
Testable makes testing easy for different situations, like **checking web apps** or **testing APIs**, and **running load tests**. It **runs tests securely in the cloud or on your own servers** with open-source tools. You get **real-time reports** with details on each test, **including videos and performance info**.

It's easy to use with popular testing tools and scales up for big **tests across different browsers** and **devices**. You can integrate it with your other tools and get support anytime. Testable keeps your tests safe and helps you find and fix issues quickly.

Ensure your websites, apps, and APIs function and perform as intended using your favorite open-source tools







# Lapchi®

## High-Quality Handmade Rugs

Lapchi provides a user-friendly platform for exploring and acquiring high-quality handmade rugs. Users can effortlessly navigate through a diverse selection of rugs categorized by style, size, and design. Detailed descriptions and high-resolution images allow users to appreciate the craftsmanship before making a selection. The website's customization tools enable users to personalize rugs according to their preferences, experimenting with colors, patterns, dimensions, and materials in real-time.

Moreover, Lapchi seamlessly integrates an Enterprise Resource Planning (**ERP**) system into its operations, ensuring streamlined resource management and operational efficiency. This integration facilitates tasks such as **inventory management**, **production planning**, quality control, and data analysis, enhancing the overall functionality of the Handmade Rug Business. With its dedication to personalized service and exceptional shopping experiences, Lapchi aims to exceed users' expectations by delivering high-quality handmade rugs that reflect their unique preferences and requirements.



# Pickle

## PICKLE

Redefining Fashion Rental with Sustainable Peer-to-Peer Marketplace

Pickle redefines fashion rental with its innovative peer-to-peer marketplace, promoting affordability and sustainability. The platform enables users to rent clothes directly from their community, offering the latest trends with same-day local courier delivery for added convenience.

Pickle features a **mobile app developed** using React Native and a **web app** using React JS. The mobile app ensures a smooth experience for users, while the web app is **responsive across different screen sizes**. Essential features such as **user authentication**, **data synchronization**, and **payment processing** are seamlessly integrated into both platforms, **ensuring secure sign-ins** and transactions.

# Pickle Today, Wear Tonight

Rent what's trending from your city's coolest closets

 Download on the  
App Store

200K+ items to rent



# BOOK CORNER

## Publisher

Book Corner serves as an excellent online destination for discovering a wide variety of books. Designed with user-friendliness in mind, it allows individuals to easily find and purchase their desired books. The addition of a "New Releases" section keeps users informed about the latest publications across different genres, enhancing their reading experience and encouraging regular engagement with the platform.

Furthermore, Book Corner features a **comprehensive admin panel**, developed to streamline operations and enhance user experience. With **integrated POS** capabilities, the platform offers a unified shopping experience across digital and physical storefronts. With **thousands of books available** on the web app, Book Corner is committed to delivering technical excellence and customer-centric innovation in the **online** book retail landscape.



# Happy Customers



Mattermost Open-Source, self-hosted chat platform - Developed plugin for MantisBT



Sitepics - Image management for businesses



CCL Pharma - AR-based ad network



WMC-Tech - Trucks & Logistics Tracking

5dkey – Mobile-first virtual access control and credential management for Companies



VERROO - Smart Locks for Business and Homes



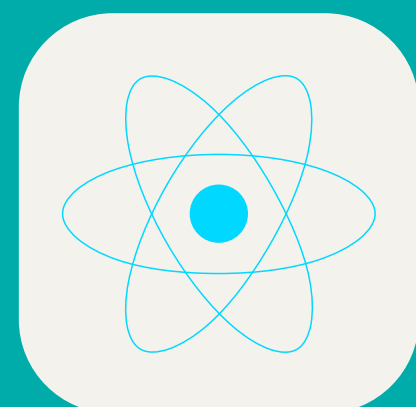
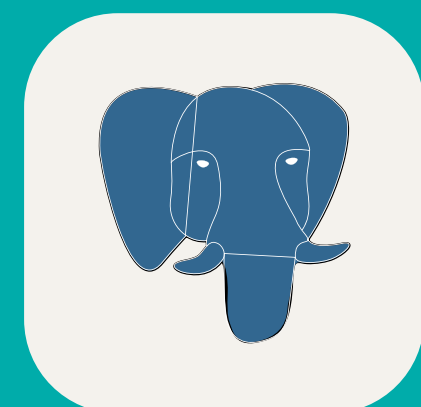
EveryChef – Ready-to-eat meals and food service kits for Australian businesses



Kinde – Identity and Access Management for modern applications









<https://linkedin.com/company/aalasolutions>



<https://facebook.com/aalasolutions/>



<https://wa.me/971556438549>



<https://aalasolutions.com>

+971-55-643-8549

info@aalasolutions.com

Office # 2538, 25th Floor Iris Bay Tower  
Business Bay, Dubai, United Arab Emirates